

DISCOVER YOUR HARRIS

MODEL SPECIFICATIONS BOOK | 2023 HARRIS®

All information contained in this brochure is believed to be correct as of printing. Not all accessories shown in pictures described are standard equipment or available as options. Options and features are subject to change without notice. Not all model year boats may contain all the features or meet the specifications described in the brochure. All weight specifications are approximate. Bimini lengths may vary slightly due to stretching and mounting. Confirm availability of all accessories and equipment with your authorized dealer prior to purchase.

PERFORMANCE PACKAGES

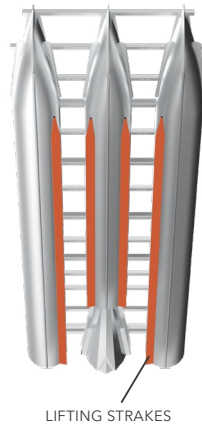
OUR PERFORMANCE PACKAGES LET YOU CUSTOMIZE YOUR BOAT FOR HOWEVER YOUR FAMILY LIKES TO SPEND TIME.

Our Standard package (standard on select Grand Mariner, Solstice, Sunliner and Cruiser models) includes two 25" diameter tubes, full length keel, reinforced nose cones, rear skin kit, and 28-gallon fuel tank. For more buoyancy, the Enhanced Standard package is a step up to two 27" diameter tubes.

LEVEL 1

This package is the most economical, easiest way to cruise or fish.

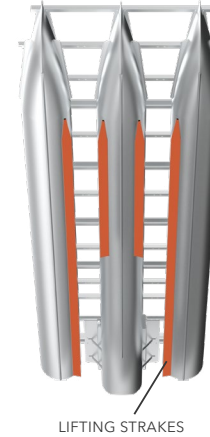
- Two 25" diameter outer tubes
- Partial 25" diameter center tube
- 28-gal. fuel capacity
- Skin kit to front crossmember
- Available on Cruiser and Sunliner



LEVEL 2

Our most popular package is great for water sports and offers more space, control and power.

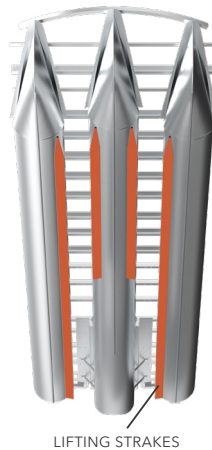
- Three 25" diameter tubes
- 37-gal. fuel capacity
- Integrated motor pod
- Ski tow bar
- Skin kit to front crossmember
- In-floor storage included on Solstice, Grand Mariner, and Crowne; optional on Sunliner and Cruiser



LEVEL 3

This package offers more stability, a larger tank, and more power—with a slight compromise on guest capacity.

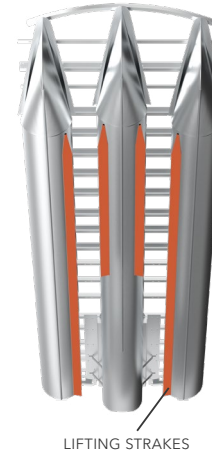
- Three 25" diameter tubes
- 63-gal. fuel capacity
- Skin kit to front crossmember
- Ski tow bar or pylon
- In-floor storage
- Available on Solstice, Grand Mariner, and Crowne



LEVEL 3.5

Wider tubes and more buoyancy makes this package ideal for large, rough bodies of water.

- Three 27" diameter tubes
- 63-gal. fuel capacity
- Skin kit to front crossmember
- Ski tow bar or pylon
- In-floor storage included on Solstice, Grand Mariner, and Crowne; optional on Sunliner and Cruiser



PERFORMANCE FEATURES



FULL ALUMINUM UNDERSKIN

reduces drag and splash for a quiet, smooth ride.



UNIQUELY PLACED STRAKES

get you onto plane more quickly for better performance.



DROPPED CENTER TUBE

on triple-toons creates a v-hull shape for easier turning and control.



ANTI-CORROSION SALTWATER ANODES

available with any performance package.



FULL-LENGTH KEEL

provides better tracking.



REINFORCED NOSE CONES

slice water with minimal spray and improve durability and handling.

Construction of performance package varies by model; drawing is shown for marketing purposes only.

All information contained in this brochure is believed to be correct as of printing. Not all accessories shown in pictures described are standard equipment or available as options. Options and features are subject to change without notice. Not all model year boats may contain all the features or meet the specifications described in the brochure. All weight specifications are approximate. Bimini lengths may vary slightly due to stretching and mounting. Confirm availability of all accessories and equipment with your authorized dealer prior to purchase.

CROWNE

ELEGANCE & POWER

With a sleek glass dash, Simrad® displays and buttery-soft upholstery, the luxurious Crowne is the ultimate in on-board entertaining.



AT HARRISBOATS.COM

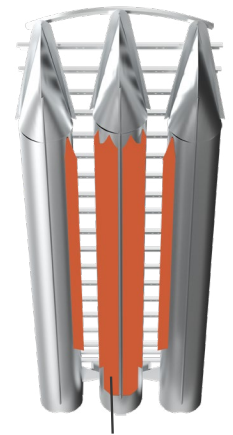
	SL 250 Single Outboard	SL 270 Single Outboard	SL 250 TE Twin Outboards	SL 270 TE Twin Outboards
Overall Length	27'11"	29'9"	26'9"	28'10"
Pontoon Length	25'	28'	26'	28'
Tube Diameter	25"	27"	27"	27"
Beam Width	8'6"	8'6"	8'6"	8'6"
Weight - lbs*	4,161	5,243	4,665	5,111
Person Capacity**	9-14	13-16	8-11	7-13
Max Weight Capacity - lbs*	2,639	3,067	2,993	3,235
Fuel Capacity (PL2 / PL3) - gal	37 / 63	- / 63	93	93
Max HP	450	450	Twin 350	Twin 450

*Weights represent approximate dry weight of boat including options excluding engine. Weight capacities represent standard option for each model.
 **Person capacity ratings represent approximate number of people. Rating will vary by configuration and selected options. Refer to installed capacity plate for exact rating.

TWIN ENGINE PERFORMANCE PACKAGE

Available exclusively on Crowne, this package is the ultimate way for your family to get the most out of your pontoon.

- Three 27" diameter tubes
- 93-gal. fuel capacity
- Up to 900 hp with twin 450R option, and 60 mph
- Optional joystick piloting with GPS anchoring
- Waypoint auto-heading



LIFTING STRAKES

BUILD YOUR CROWNE AT HARRISBOATS.COM

All information contained in this brochure is believed to be correct as of printing. Not all accessories shown in pictures described are standard equipment or available as options. Options and features are subject to change without notice. Not all model year boats may contain all the features or meet the specifications described in the brochure. All weight specifications are approximate. Bimini lengths may vary slightly due to stretching and mounting. Confirm availability of all accessories and equipment with your authorized dealer prior to purchase.

GRAND MARINER

SUN-FILLED DAYS. GLITTERING NIGHTS.

With vivid new color options, spacious leg room, custom user interface and CZone® control, helping the Grand Mariner is a captain's dream.



AT HARRISBOATS.COM

	230	250	270
Overall Length	26'2"	27'11"	29'9"
Pontoon Length	23'	25'	27'
Tube Diameter	25"	25"	25"
Beam Width	8'6"	8'6"	8'6"
Weight (2 tubes) - lbs*	3,166	3,306	-
Weight (3 tubes) - lbs*	3,829	4,045	4,318
Person Capacity (2 tubes)**	9-11	11-13	-
Person Capacity (3 tubes)**	10-13	9-15	11-14
Max Weight Capacity (2 tubes) - lbs**	2,056	2,272	-
Max Weight Capacity (3 tubes) - lbs**	2,265	2,497	2,743
Fuel Capacity (2 tubes) - gal	28	28	-
Fuel Capacity (PL2 / PL3) - gal	37 / 63	37 / 63	37 / 63
Max HP (2 tubes)	200	200	-
Max HP (3 tubes)	300	450	450

*Weights represent approximate dry weight of boat with options excluding engine. Weights represent 25" diameter tube configurations.

**All capacity ratings represent approximate number of people. Rating will vary by configuration and selected options. Refer to installed capacity plate for exact rating.

BUILD YOUR GRAND MARINER AT HARRISBOATS.COM

All information contained in this brochure is believed to be correct as of printing. Not all accessories shown in pictures described are standard equipment or available as options. Options and features are subject to change without notice. Not all model year boats may contain all the features or meet the specifications described in the brochure. All weight specifications are approximate. Bimini lengths may vary slightly due to stretching and mounting. Confirm availability of all accessories and equipment with your authorized dealer prior to purchase.

SOLSTICE

FLASHY. FIERCE. FUN.

Reimagined and ready for action, the 2023 Solstice has an ergonomic helm, sporty color options, luxury comfort and more standard amenities than ever before.



DISCOVER THE
Solstice
AT [HARRISBOATS.COM](https://www.harrisboats.com)

	230	250	DC 250	RD 260
Overall Length	26'2"	27'11"	27'11"	30'1"
Pontoon Length	23'	25'	25'	25'9"
Tube Diameter	25"	25"	25"	27"
Beam Width	8'6"	8'6"	8'6"	8'6"
Weight (2 tubes) - lbs*	2,728	2,903	-	-
Weight (3 tubes) - lbs*	3,216	3,636	3,561	4,882
Person Capacity (2 tubes)**	10-12	12-13	-	-
Person Capacity (3 tubes)**	11-14	11-15	12-15	14-15
Max Weight Capacity (2 tubes) - lbs**	2,219	2,427	-	-
Max Weight Capacity (3 tubes) - lbs**	2,430	2,571	2,597	2,838
Fuel Capacity (2 tubes) - gal	28	28	-	-
Fuel Capacity (PL2 / PL3) - gal	37 / 63	37 / 63	37 / 63	63
Max HP (2 tubes)	200	200	-	-
Max HP (3 tubes)	300	400	400	300

*Weights represent approximate dry weight of boat with options excluding engine. Weights represent 27" diameter tube configuration for RD260 and 25" diameter tube configurations for all others.

**All capacity ratings represent approximate number of people. Rating will vary by configuration and selected options. Refer to installed capacity plate for exact rating.

BUILD YOUR SOLSTICE AT [HARRISBOATS.COM](https://www.harrisboats.com)

All information contained in this brochure is believed to be correct as of printing. Not all accessories shown in pictures described are standard equipment or available as options. Options and features are subject to change without notice. Not all model year boats may contain all the features or meet the specifications described in the brochure. All weight specifications are approximate. Bimini lengths may vary slightly due to stretching and mounting. Confirm availability of all accessories and equipment with your authorized dealer prior to purchase.

SUNLINER

BUILT FOR EVERYONE

Crafted to handle any adventure, the Sunliner offers a reclining helm seat, pillowtop furniture and a massive rear-facing lounger.



AT HARRISBOATS.COM

	210	230	230 SPORT	250	250 SPORT
Overall Length	22'1"	23'5"	23'5"	25'10"	25'10"
Pontoon Length	20'6"	22'	22'	24'	24'
Tube Diameter	25"	25"	25"	25"	25"
Beam Width	8'6"	8'6"	8'6"	8'6"	8'6"
Weight (2 tubes) - lbs*	2,144	2,496	-	2,702	-
Weight (3 tubes) - lbs*	2,425	2,812	3,098	3,088	3,374
Person Capacity (2 tubes)**	9-12	10-13	-	12-15	-
Person Capacity (3 tubes)**	10-12	11-14	11-12	14-16	14-16
Max Weight Capacity (2 tubes) - lbs*	1,964	2,072	-	2,315	-
Max Weight Capacity (3 tubes) - lbs*	2,120	2,306	2,372	2,658	2,658
Fuel Capacity (2 tubes) - gal	28	28	-	28	-
Fuel Capacity (PL2 / PL3) - gal	37 / 63	37 / 63	37 / 63	37 / 63	37 / 63
Max HP (2 tubes)	200	200	-	200	-
Max HP (3 tubes)	200	300	300	300	300

*Weights represent approximate dry weight of boat including options excluding engine. Weights and weight capacities represent 25" diameter tube configurations.
 **Person capacity ratings represent approximate number of people. Rating will vary by configuration and selected options. Refer to installed capacity plate for exact rating.

BUILD YOUR SUNLINER AT HARRISBOATS.COM

All information contained in this brochure is believed to be correct as of printing. Not all accessories shown in pictures described are standard equipment or available as options. Options and features are subject to change without notice. Not all model year boats may contain all the features or meet the specifications described in the brochure. All weight specifications are approximate. Bimini lengths may vary slightly due to stretching and mounting. Confirm availability of all accessories and equipment with your authorized dealer prior to purchase.

CRUISER

VALUE WITHOUT COMPROMISE

With its reclining helm seat, pillowtop furniture and a massive rear-facing lounge, the Cruiser is made to go anywhere and do anything.



AT HARRISBOATS.COM

	190	210	230	250
Overall Length	20'1"	22'1"	23'5"	25'10"
Pontoon Length	18'6"	20'6"	22'	24'
Tube Diameter	25"	25"	25"	25"
Beam Width	8'6"	8'6"	8'6"	8'6"
Weight (2 tubes) - lbs*	1,936	2,144	2,496	2,702
Weight (3 tubes) - lbs*	-	2,425	2,812	3,088
Person Capacity (2 tubes)**	8	9-12	10-13	12-15
Person Capacity (3 tubes)**	9	10-12	11-14	14-16
Max Weight Capacity (2 tubes) - lbs*	1,667	1,964	2,072	2,315
Max Weight Capacity (3 tubes) - lbs*	1,711	2,120	2,306	2,658
Fuel Capacity (2 tubes) - gal	28	28	28	28
Fuel Capacity (PL2 / PL3) - gal	-	37 / 63	37 / 63	37 / 63
Max HP (2 tubes)	75	200	200	200
Max HP (3 tubes)	90	200	300	300

*Weights represent approximate dry weight of boat including options excluding engine. Weights and weight capacities represent 25" diameter tube configurations.
 **Person capacity ratings represent approximate number of people. Rating will vary by configuration and selected options. Refer to installed capacity plate for exact rating.

BUILD YOUR CRUISER AT HARRISBOATS.COM

All information contained in this brochure is believed to be correct as of printing. Not all accessories shown in pictures described are standard equipment or available as options. Options and features are subject to change without notice. Not all model year boats may contain all the features or meet the specifications described in the brochure. All weight specifications are approximate. Bimini lengths may vary slightly due to stretching and mounting. Confirm availability of all accessories and equipment with your authorized dealer prior to purchase.

FEATURE COMPARISON CHART

- Standard
- Optional
- Not Available

		CRUISER	SUNLINER		SOLSTICE			GRAND MARINER	CROWNE	
				SPORT		DC	RD		SL	SL TE
COVERS & TOPS	10' Bimini	●	●	-	●	●	-	-	-	-
	12' Bimini	○	○	-	○	○	-	●	-	-
	10' Electric Power Top Bimini (with Bimini LED Lights)	○	○	-	○	○	-	○	-	-
	Double Bimini	○	○	-	○	○	-	○	-	-
	Double Bimini with Tower or Arch	-	-	○	○	○	-	○	○	○
	Ion Tower	-	-	-	○	○	-	○	-	-
	Ultra Tower	-	-	-	○	○	-	○	-	-
	Delux Tower	-	-	●	-	-	-	-	-	-
	Sport Arch with Bimini & Power Lift	-	-	-	-	-	-	-	●	●
	EVO 2.0 Tower with Bimini & Power Lift	-	-	-	○	○	-	-	-	-
	Articulating Top	-	-	-	-	-	-	-	○	○
	Mooring Cover (EZ-Clip System)	●	●	●	●	●	●	●	-	-
	Snap Mooring Cover	-	-	-	-	-	-	-	●	●
	Seat Covers	○	○	○	○	○	○	○	-	-
HELM HIGHLIGHTS	DC Receptacle, 12V	●	●	●	●	●	●	●	●	●
	Digital Depth Sounder	○	○	○	-	-	-	-	●	●
	Tachometer	●	●	●	●	●	●	●	●	●
	GPS Speedometer	●	●	●	●	●	●	●	●	●
	Lockable Glovebox	○	●	●	●	●	●	●	●	●
	Helm Storage Door	●	●	●	-	●	-	-	●	●
	Rearview Mirror	○	○	○	○	○	○	○	○	○
	Raised Helm	-	○	○	○	-	-	●	-	-
	Tilt Steering	○	●	●	●	●	●	●	●	●
	Rear-Facing Camera (Req Arch/Tower & Glass Dash)	-	-	-	-	-	-	-	○	○
	Wireless Mobile Phone Charging Pad	○	○	○	●	-	●	●	-	-
Glass Dash	-	-	-	-	-	-	-	○	○	

All information contained in this brochure is believed to be correct as of printing. Not all accessories shown in pictures described are standard equipment or available as options. Options and features are subject to change without notice. Not all model year boats may contain all the features or meet the specifications described in the brochure. All weight specifications are approximate. Bimini lengths may vary slightly due to stretching and mounting. Confirm availability of all accessories and equipment with your authorized dealer prior to purchase.

FEATURE COMPARISON CHART

- Standard
- Optional
- Not Available

		CRUISER	SUNLINER		SOLSTICE			GRAND MARINER	CROWNE	
				SPORT		DC	RD		SL	SL TE
COMFORT & CONVENIENCE	Single Battery Disconnect Switch	○	○	○	-	-	-	-	-	-
	Double Battery Selector Switch	○	○	○	●	●	●	●	●	●
	120V Battery Charger	○	○	○	○	○	○	○	○	●
	Changing Room	○	○	○	○	-	○	○	○	○
	Stainless Steel Cupholders	○	○	○	●	●	●	●	●	●
	Extended Rear Deck/Swim Platform	○	●	●	●	●	●	●	●	-
	Fence Mounted Docking Lights	○	●	●	●	●	●	●	●	●
	Upholstered Fence Interior	-	-	-	-	-	-	○	●	●
	8.8" Quick Release Fender System	○	○	○	○	○	○	○	●	●
	Two Add'l 8.8" Fenders with Straps	○	○	○	○	○	○	○	○	○
	Fire Extinguisher (<i>Manual</i>)	○	○	○	●	●	●	●	●	●
	Gate Floor Stops	●	●	●	●	●	●	●	●	●
	Stainless Steel Grill	○	○	○	○	-	○	○	-	-
	4-step Telescoping Stainless Steel Ladder	●	●	●	●	●	●	●	●	●
	Midship Mooring Eyes	○	○	○	○	○	○	○	○	○
	Stainless Steel Safety Railing	○	○	○	○	○	-	○	●	●
	Stainless Steel Refrigerator	-	-	-	○	-	-	○	○	○
Pressurized Faucet	-	-	-	○	-	-	○	○	○	

FEATURE COMPARISON CHART

- Standard
- Optional
- Not Available

		CRUISER	SUNLINER		SOLSTICE			GRAND MARINER	CROWNE	
				SPORT		DC	RD		SL	SL TE
FISHING FEATURES	Fish Finder with Depth Sounder (Hook2-4X)	○	○	○	-	●	-	-	-	-
	Simrad® GO7 (GPS Chartplotter, VesselView® & Fish Finder)	○	○	○	●	○	●	●	○	-
	Simrad GO9 (GPS Chartplotter, VesselView & Fish Finder)	-	○	○	○	○	○	○	○	●
	Gate, Half Bow for Trolling Motor	○	-	-	-	-	-	-	-	-
PACKAGES	Tech Package 1	○	○	○	-	-	-	-	-	-
	Tech Package 2	-	○	○	-	-	-	-	-	-
	Delux Tech Package 1	-	-	-	○	○	○	○	-	-
	Delux Tech Package 2	-	-	-	○	○	○	○	-	-
	Convenience Pkg	○	○	○	○	○	○	○	-	-
	Interior Lighting Pkg (LED RGB)*	○	○	○	●	●	●	●	○	○
	Total Lighting Pkg (LED RGB)*	-	-	-	○	○	○	○	○	○
	Performance Pkg Level 1 (Adds a 25" Partial Center Tube)	○	○	-	-	-	-	-	-	-
	Performance Pkg Level 2 (Three 25" Tubes, 37 gal fuel tank & Ski Tow Bar)	○	○	●	-	-	-	-	-	-
	Performance Pkg Level 2 (Three 25" Tubes, 37 gal fuel tank In-Floor Storage & Ski Tow Bar)	-	-	-	○	●	-	○	●	-
	Performance Pkg Level 3 (Three 25" Tubes, In-Floor Storage, 63 gal Tank & Ski Tow Bar/Pylon)	-	-	-	○	○	-	○	○	-
	Performance Pkg Level 3.5 (Three 27" Tubes, 63 gal Tank)	○	○	○	-	-	-	-	-	-
	Performance Pkg Level 3.5 (Three 27" Tubes, In-Floor Storage, 63 gal Tank, & Ski Tow Bar/Pylon)	-	-	-	○	○	●	○	○	-
	Twin Engine Platform	-	-	-	-	-	-	-	-	●
	Salt Water Pkg	○	○	○	○	○	○	○	○	○
In-Floor Storage (Req Performance Level 2 or 3.5)	○	○	○	-	-	-	-	-	-	
STEREO UPGRADE PACKAGE	JL Audio® Zone Control Stereo, 8 JL Speakers (Sol RD inc 2 Head Units, EGDH only 6 Speakers)	-	-	-	●	●	●	●	●	●
	JL Audio Diamond Sound System (Amp, Subwoofer, Stereo & 6 Speakers on Cruiser/Sunliner or 8 Speakers on Solstice [EGDH 6], Grand Mariner, and Crowne models)	-	○	○	○	○	○	○	○	○
	JL Audio Platinum Sound System (2 DSP Amps, 2 Subwoofers, Stereo & 8 Speakers. EGDH - 6 speakers)	-	-	-	○	○	○	○	○	○
	Clarion® Bluetooth® Stereo (4 Clarion Speakers)	●	●	●	-	-	-	-	-	-
	Tower Speakers (Require Tower & JL Diamond/Platinum Upgrade)	-	-	-	○	○	-	○	-	-

*Lighted speaker options vary by model and layout. Interior and Total Lighting Packages come standard with CZone® digital switching technology on Solstice 230, 250, RD 260 and Grand Mariner 230, 250, and 270 models.

FEATURE COMPARISON CHART

- Standard
- Optional
- Not Available

		CRUISER	SUNLINER			SOLSTICE			GRAND MARINER	CROWNE	
				SPORT		DC	RD		SL	SL TE	
FENCE	Black Anodized Fence & Rubrail	○	○	○	○	○	○	○	●	●	
	Stainless Steel Rubrail	-	-	-	○	○	○	○	●	●	
FURNITURE	Adjustable Height Seat Base	○	○	○	○	●	○	-	○	○	
	Lux Helm Seat (<i>Lowback Recliner</i>)	●	●	●	-	-	-	-	-	-	
	UltraLux Helm Seat (<i>Highback Recliner</i>)	○	○	○	●	●	●	●	●	●	
	UltraLux Helm Seat with Flip-up Bolster	○	○	○	○	○	○	-	○	○	
	USB Charging Ports (<i>in furniture</i>)	●	●	●	-	-	-	-	-	-	
	USB/USB-C Charging Ports (<i>in furniture</i>)	-	-	-	●	●	●	●	●	●	
	Jump Seat	○	○	○	○	○	○	○	-	-	
	Swim Seat (<i>Req 3 tubes</i>)	-	-	-	○	○	-	○	○	-	
	Woodgrain Luxury Sport Table Upgrade	●	●	●	●	●	●	●	●	●	
	Black Acrylic Table Upgrade with Stemware Holders	○	○	○	○	○	○	○	○	○	
Articulating/Folding Teak Table Upgrade	-	-	-	-	-	-	-	-	○	-	
PERFORMANCE & HANDLING	Xtreme Steering (<i>Engines<115HP; N/A Hyd. & PAS Steering</i>)	○	○	-	○	-	-	-	-	-	
	Hydraulic Steering	○	○	-	○	●	●	●	●	●	
	Power Assist Steering	○	○	○	○	○	○	○	○	-	
	Lifting Strakes	○	○	●	○	●	●	○	●	●	
	Mercury® ActiveTrim	○	○	○	○	○	○	○	○	●	
	Polished Tubes (<i>Warranty Excluded</i>)	-	-	-	-	-	-	○	○	○	
	Stainless Steel Ski Tow Bar	○	○	●	○	●	-	○	●	-	
	Stainless Steel Ski Tow Pylon (<i>Removable</i>)	-	-	-	○	○	-	○	○	-	
	Single-Engine Joystick Piloting*	-	-	-	○	-	-	○	○	-	
Twin-Engine Joystick Piloting	-	-	-	-	-	-	-	-	○		

*Single-Engine Joystick option affects capacity ratings. Refer to installed capacity plate for exact rating.

SAY HELLO TO
EXTRAORDINARY

HARRIS®

HARRISBOATS.COM | 1111 North Hadley Road, Fort Wayne, IN 46804